

BarnBuilt Burning Rubber

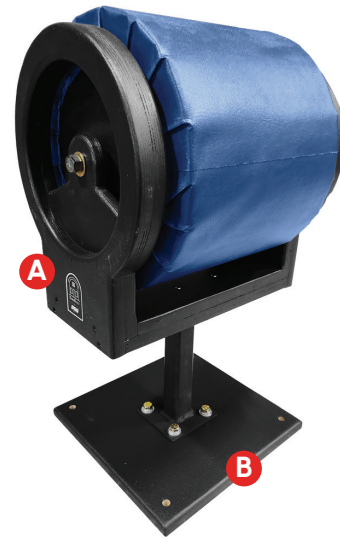
SKU: MCMB-BURNR

Recommended Tools:

- 9/16" Wrench or Socket
- 7/32" Hex Key (Allen Wrench)

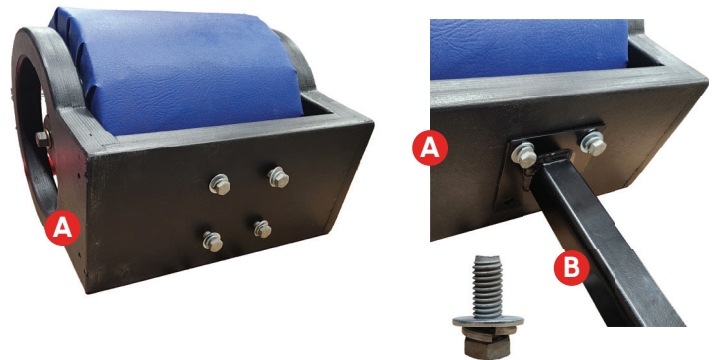
Step 1:

The **Burning Rubber Top (A)** comes with some pre-installed hardware. Remove all **3/8"-16 x 1" Hex Bolts**, **3/8" Lock Washers**, and **3/8" Flat Washers** from the bottom of the top piece.



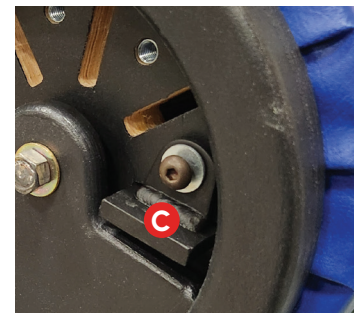
Step 2:

Reassemble the **Hex Bolts** with a **Lock Washer** and **Flat Washer**, then use them to securely attach the **Burning Rubber Top (A)** to the **Burning Rubber Base (B)**.



IMPORTANT:

For a more stable balance obstacle, you can install the optional **Stopper Plates (C)** on the side of the **Burning Rubber Top (A)** with a **3/8" Flat Washer** and **Button Head Hex Screw** to prevent the wheel from spinning.



Part Number	Part Description	Quantity
CUSTOM	Burning Rubber Top (A)	1
CUSTOM	Burning Rubber Base (B)	1
91286A627	3/8"-16 x 1" Hex Bolts	4
1133622	3/8" Lock Washer	4
1133006	3/8" Flat Washer	6
CUSTOM	Stopper Plate (C)	2
91255A626	Button Head Hex Screw	2

Need help?

Call 1-800-932-3339 or
Email info@gymsupply.com